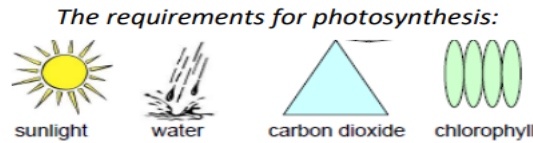
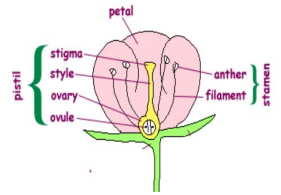


# How does a blossom become an apple?



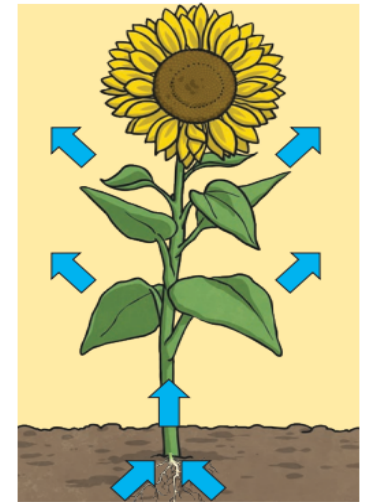
**Chlorophyll** is a green substance found inside leaves which is responsible for absorbing light.



<b>Air</b>	An invisible gas, made up of mainly oxygen and nitrogen.
<b>Nutrients</b>	Parts of foods that a living thing uses to survive and grow.
<b>Soil</b>	Substance on the surface of the Earth in which plants grow, made up of pieces of rock and humus.
<b>Fertiliser</b>	Substance that is added to soil to help the growth of plants.
<b>Pollination</b>	When pollen is moved from plant to plant to produce more plants.
<b>Seed dispersal</b>	When seeds are carried away from the parent plant.
<b>Photosynthesis</b>	The process by which green plants use the sun's energy from sunlight along with water and carbon dioxide to produce their own food in the form of glucose (sugar).
<b>Fruit Formation</b>	It is here that the seeds are found.

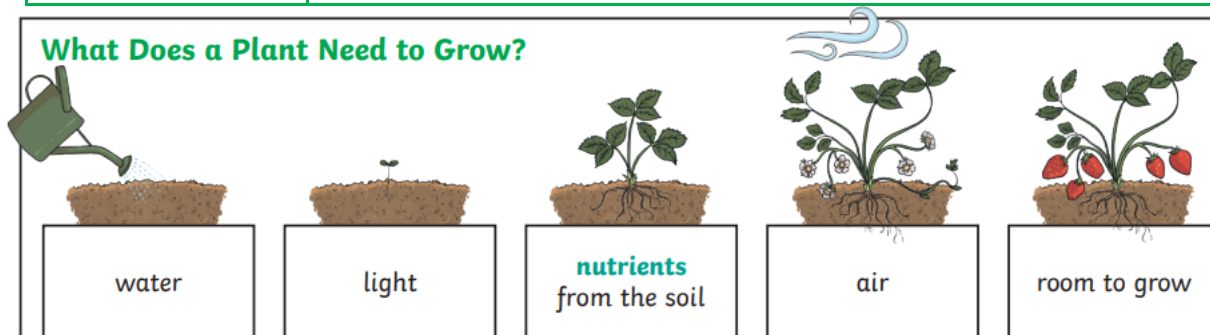
## How Water Moves through a Plant

1. The **roots** absorb water from the soil.
2. The **stem** transports water to the **leaves**.
3. Water **evaporates** from the **leaves**.
4. This **evaporation** causes more water to be sucked up the **stem**.



The water is sucked up the **stem** like water being sucked up through a straw.

## What Does a Plant Need to Grow?



Different plants vary in how much of these things they need. For example, cacti can survive in areas with little water, whereas water lilies need to live in water.

## Life Cycle of a Flowering Plant

