



# FARNBOROUGH PRIMARY SCHOOL

Farnborough Hill, Farnborough, Orpington, Kent BR6 7EQ

Telephone 01689 853295 Fax 01689 889286

Email: [admin.office@farnborough.bromley.sch.uk](mailto:admin.office@farnborough.bromley.sch.uk)

Website: [www.farnboroughprimary.co.uk](http://www.farnboroughprimary.co.uk)

Miss A James BA PGCE Head Teacher

Mrs C Browne B.Ed Hons Head of School

16 October 2020

Dear Parents/Carers,

Well...we are nearly there; our first full half term at school for over half a year! The children, although now very tired, have been incredible. They have produced some excellent work across all areas of the curriculum and are beginning to show that they are making very good progress in their lessons. As always, we are very proud of each and every one of the children and their continued excellent attitude towards school life.

Thank you to those of you who have participated in our Friday Achievement Assemblies. We hope you have enjoyed them as much as the children enjoy seeing you. We hope to see many more of you after the half term.

## Foodbank

Every year we ask that donations are made to support our local foodbank. This year more than ever it seems more pertinent that we support this charity. There are so many people who rely on foodbanks to provide food and necessary supplies to feed their families, and this year we are seeing unprecedented hardship for so many. I know that not everyone will be in a position to donate to our foodbank charity this year, as they themselves are going through financial hardship; and as always if there is anything we can do to help, please let us know; but I also know that many of us are still fortunate enough to be able to make a donation.

I cannot stress enough how appreciated these donations will be to families that rely on the generosity of others to feed their children. Please help us to make a positive difference and donate as much as you possibly can. Although we are a 'drinks' schools, please contribute anything you are able to, as it certainly won't go to waste.

I really don't mean to lecture anyone as it is not my place to and I know that everyone has gone and is going through so many different hardships and sad events, particularly over the past few months; I just want us all to give as much as we can, to help fellow people who have been left with so little at this time.

So on the **morning of Friday 23 October**, please bring as many donations as possible and put in our boxes to take to the Foodbank.

If there is anyone that could spare an hour to help drive the food and drink to the warehouse in Bromley, please email the admin.office email address, it would be hugely appreciated.



Farnborough Primary School is a member of **Nexus Education Schools Trust**

**Nexus Education Schools Trust (NEST)** is a charitable company

limited by guarantee and registered in England and Wales

Company Number 08753718.

The registered office is at Worsley Bridge Primary School, Brackley Road, Beckenham, Kent BR3 1RF.

National Support School  
designated by



National College for  
Teaching & Leadership



# FARNBOROUGH PRIMARY SCHOOL

Farnborough Hill, Farnborough, Orpington, Kent BR6 7EQ

Telephone 01689 853295 Fax 01689 889286

Email: [admin.office@farnborough.bromley.sch.uk](mailto:admin.office@farnborough.bromley.sch.uk)

Website: [www.farnboroughprimary.co.uk](http://www.farnboroughprimary.co.uk)

Miss A James BA PGCE Head Teacher

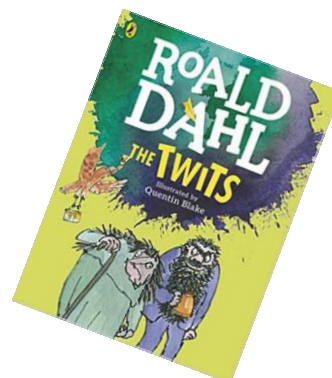
Mrs C Browne B.Ed Hons Head of School



## Reading

Now that we have had half a term together getting used to the new systems, we feel that we are in a place to now change some of our practice with regards to reading. From Monday 2 November children in Reception and KS1 will be able to bring one reading book home a week along with a class library book. The children will be given these books in class on a Friday and they will be allowed to bring them home on a Monday. All books must be returned every Friday, so we can quarantine the reading books over the weekend. Books will be sent home in a folder and must be returned in the same folder. For the foreseeable future we will not be issuing Reading Record books. Reception parents/carers will still be able to email their comments to Mrs Holmes.

Targeted children in KS2 will also be able to bring reading books home. Parents/carers will be informed during next week's parent's meetings if their child will be bringing home a reading book. In addition to this children in KS2 will be able to bring in a reading book from home. These will stay in the children's trays until they finish their book, when they will then bring them back home and bring in another book if they wish to. The children may bring these in on 2 November, and carry them in their hands. Please may we remind you, that bags of any sort will not be permitted onto the school site, unless requested by the school.



Farnborough Primary School is a member of **Nexus Education Schools Trust**

**Nexus Education Schools Trust (NEST)** is a charitable company

limited by guarantee and registered in England and Wales

Company Number 08753718.

The registered office is at Worsley Bridge Primary School, Brackley Road, Beckenham, Kent BR3 1RF.

National Support School  
designated by



National College for  
Teaching & Leadership



# FARNBOROUGH PRIMARY SCHOOL

Farnborough Hill, Farnborough, Orpington, Kent BR6 7EQ

Telephone 01689 853295 Fax 01689 889286

Email: [admin.office@farnborough.bromley.sch.uk](mailto:admin.office@farnborough.bromley.sch.uk)

Website: [www.farnboroughprimary.co.uk](http://www.farnboroughprimary.co.uk)

Miss A James BA PGCE Head Teacher

Mrs C Browne B.Ed Hons Head of School

## Health and Safety of All

Thank you to all of the parents/carers/grandparents and childminders who have waited so patiently in our queuing system over the past half term. I know it is far from ideal and as we head into the colder weather and are on the brink of entering 'Tier 2' I think our time spent 'queuing' is only set to increase.

Whilst I understand the system is slow and frustrating, it has been put in place to try and ensure the safety of all. Mrs Ellson has sent out many reminders, but we still find that some parents are skipping the queue completely and waiting for their children on the other side of the road, or trying to collect all of their children at the same time. This is not fair on all the other parents that are abiding by our guidelines. The same guidance is applicable to all, whether on foot, bicycle, car or scooter.

Please find below an example of one of the many emails of complaint that we get from our parents.

*'Dear Miss James and Mrs. Ellson,*

*Thank you very much for the letter from Bromley Council. Although I think that the majority of parents are adhering to the rules set out, may I just voice my concern that there are parents that on a regular basis just join other parents in queues or jump queues. Maybe this concern could be raised as well? I don't mean to complain at all, just think it is not fair on other parents who have 2 queues to join and everyone should respect the rules set out.*

*I just think every parent should respect the rules.'*

Please may we remind you to adhere to social distancing measures when outside the school gates waiting for your children or when dropping them off to school and please ensure that the main gates are kept clear.

## Poppy Appeal

This year, we will still be supporting the Poppy Appeal. If you are happy for your child to purchase any of the items that are being sold to raise money for charity, please send your child in with a contribution as specified in the Poppy Appeal letter issued separately.



Farnborough Primary School is a member of **Nexus Education Schools Trust**

**Nexus Education Schools Trust (NEST)** is a charitable company

limited by guarantee and registered in England and Wales

Company Number 08753718.

The registered office is at Worsley Bridge Primary School, Brackley Road, Beckenham, Kent BR3 1RF.

National Support School  
designated by



National College for  
Teaching & Leadership





# FARNBOROUGH PRIMARY SCHOOL

Farnborough Hill, Farnborough, Orpington, Kent BR6 7EQ

Telephone 01689 853295 Fax 01689 889286

Email: [admin.office@farnborough.bromley.sch.uk](mailto:admin.office@farnborough.bromley.sch.uk)

Website: [www.farnboroughprimary.co.uk](http://www.farnboroughprimary.co.uk)

Miss A James BA PGCE Head Teacher

Mrs C Browne B.Ed Hons Head of School

## Monster Mash Day: Friday 23 October

Next Friday all children will be able to come to school in a 'Spooky' themed fancy dress costume. Whilst we are not celebrating Halloween, we thought it would be a nice way to end the half term. Weather permitting, we may be able to hold small parades on the playground during the day, so the different 'bubbles' can see each other's costumes. If your child has PE on this day, the lessons will be adapted so they can still participate in their costume.



## Parents' Meetings

If you have not booked a Parents' Meeting for next week and would still like to do so, please find below the days and times when your child's Parents' Meetings are being held. You will need to login to the school online booking system in order to make an appointment.

Class	Teacher	Date (09:00 – 15:30)
Pixies	Mrs Holmes	Friday 23 October
Cherubs	Mrs Murray	Thursday 22 October
Unicorns	Mrs Matthews	Wednesday 21 October
Pegasus	Mrs Roberts	Thursday 22 October
Giants	Mrs Browne	Friday 23 October
Griffins	Mr Vallois	Tuesday 20 October
Centaur	Miss Morrison	Thursday 22 October
Genies	Mrs Cheeseman	Wednesday 21 October
Dragons	Mr Atkinson	Wednesday 21 October

At these meetings, progress and targets will be discussed with you. Please note that your copy of your child's target sheet will be sent home after half term.

## Booster Lessons

As I am sure many of you are aware, the government will be issuing some additional funding to schools to help provide booster classes for children that may need some extra support educationally or emotionally.

You will soon be receiving a letter detailing the booster classes and be sent an invite for your child if they have been chosen for this round of interventions. We will endeavour to ensure that



Farnborough Primary School is a member of **Nexus Education Schools Trust**

**Nexus Education Schools Trust (NEST)** is a charitable company

limited by guarantee and registered in England and Wales

Company Number 08753718.

The registered office is at Worsley Bridge Primary School, Brackley Road, Beckenham, Kent BR3 1RF.

National Support School  
designated by



National College for  
Teaching & Leadership



# FARNBOROUGH PRIMARY SCHOOL

Farnborough Hill, Farnborough, Orpington, Kent BR6 7EQ

Telephone 01689 853295 Fax 01689 889286

Email: [admin.office@farnborough.bromley.sch.uk](mailto:admin.office@farnborough.bromley.sch.uk)

Website: [www.farnboroughprimary.co.uk](http://www.farnboroughprimary.co.uk)

Miss A James BA PGCE Head Teacher

Mrs C Browne B.Ed Hons Head of School

all children receive some kind of additional support throughout the course of the year; this will of course depend on many factors, including any local lockdowns or circuit breakers.

## Lost Items

Below is a picture of some items that have been left at school and have not been claimed. If you recognise any of these items as belonging to you or your child, please can you email us on the admin.office email and we will arrange for the item to be returned to you as soon as possible.



## School Meals

Please can you ensure if you have not already done so that you set up a SIMs Pay account if your child is having school meals. Your balance for school meals should not go above £10.00. If your balance does exceed this amount you will be contacted by the school to bring payment up to date. If you are having any problems with SIMs Pay or require a new invitation code please contact Mrs Ellson in the school office on 01689 853 295 who will be more than happy to assist you.

Please also be reminded it is vital for all parents to have a SIMs Pay account as we are now a cashless school and this system will be used going forward for all school trips, clubs and events etc.

Thank you as always to our parents for your patience and understanding throughout this difficult time, we do appreciate there are a lot of changes, information and communications coming your way.

We wish you a lovely and restful weekend.

Yours sincerely

Miss James  
Head Teacher



Farnborough Primary School is a member of **Nexus Education Schools Trust**

**Nexus Education Schools Trust (NEST)** is a charitable company

limited by guarantee and registered in England and Wales

Company Number 08753718.

The registered office is at Worsley Bridge Primary School, Brackley Road, Beckenham, Kent BR3 1RF.

National Support School  
designated by



National College for  
Teaching & Leadership