

Farnborough Primary School

TERM TWO

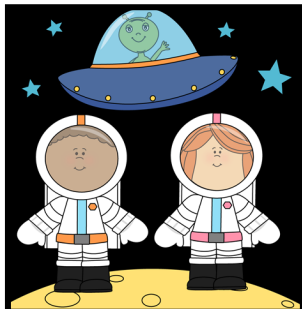


Overview of Topics

Space - we will be finding out about all the different planets and other aspects of space through information and story books.

Traditional Tales - we will be reading, acting out and writing about lots of well known traditional tales.

Early Years Foundation Stage



Visits / Events

- We have a trip to The Planetarium in Greenwich in January as part of our introduction to our Space topic.
- We also have some eggs and an incubator arriving in March so that we can watch chicks hatch and then care for them for two weeks.
- Class Assembly Tuesday 20th March at 9am.



Literacy

This term we will be focussing on re-capping the basic sounds and learning some new digraphs (two letters making one sound). We will be practising our reading skills and developing our writing skills.

We will also be continuing to practise holding a pencil using the correct grip, and learning how to form letters correctly using the cursive script.

Key Skills Covered

In Reception this term we will be focussing on skills such as:

- Sounding and blending with an increasing range of sounds
- Understanding of stories
- Pencil grip
- Cursive letter formation
- Writing simple sentences

Reading

We have daily story telling sessions —if your child has a favourite story they would like to share with the class please do send it into school for us to read. We will also be continuing our Drop Everything and Read sessions.

Role Play and Speaking and Listening

The children have a Role Play area in the classroom and a huge Dressing Up box and a stage area outside to provide lots of opportunities in this area.



ICT



In Reception we visit the ICT Suite on a weekly basis. We will continue to focus on mouse control and completing some simple tasks on the 2Simple and the new Busy Things programmes. The children also have the opportunity to explore various other programmes on the two computers in the classroom.

Mathematics

This term we will be giving the children an introduction to addition and subtraction. We will also look at size, weight and capacity, and 3D shapes.



Understanding the World

There will be lots of opportunity for the children to make sense of their physical world through our weekly visits to Forest School and hatching and caring for our chicks.



Outdoor Learning



Access to the outside learning area is provided to the children on a daily basis. Here they have the opportunity to explore on a larger scale with the Mud Kitchen, the stage and dressing up box, a large construction area, water play and sand, bikes and scooters, as well as a gardening and digging area.

Forest School

Forest School will continue to take place on a Monday afternoon. Please ensure that your child comes to school in suitable clothes for outdoor learning on this day.



Physical Development

In Reception we start the day with a 5 a Day session - this is a music and movement programme. The children also have a weekly P.E lesson and regular classroom yoga sessions. We will also be introducing Peer Massage this term.



Communication and Language

This is a key area of development in the Early Years curriculum. The children are encouraged to develop their speaking skills through Circle Time sessions, role play activities, story time and general discussion with both their peers and the adults in the classroom. We will also encourage the children to talk about anything you communicate via Parent's Voice so please keep these forms coming!



Expressive Art and Design

The children will explore and play with a wide range of media and materials and be provided with lots of opportunities to develop their imagination.

Music

This term we will be attending the weekly whole school Singing Assembly and learning songs to perform in our Class Assembly.



We will also have a regular music session in class and access to musical instruments in the outside area.

PSHE

We will continue to have a weekly Circle Time to encourage the children to talk about their thoughts and feelings.



General Notices and Dates

Parents' Evenings

Wednesday 7th March, 3.30 - 7.00pm

Thursday 8th March, 3.30 - 6.00pm

Reception Class Assembly

Tuesday 20th March at 9.00am

Support at Home

It would be fantastic if you could support your child by reading to them regularly at home and encouraging them to complete any reading and homework activities as independently as possible.

